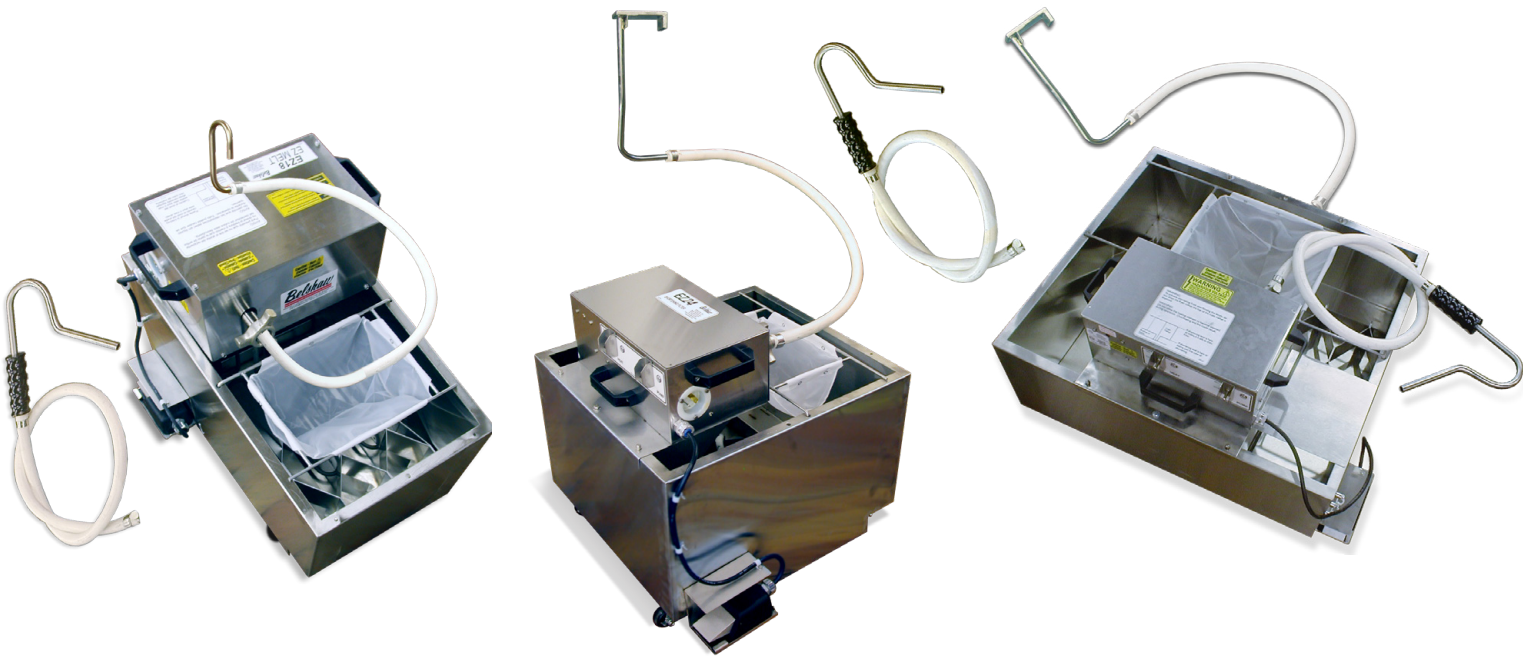


OPERATOR'S MANUAL TECHNICAL SUPPLEMENT PARTS AND ELECTRICAL DIAGRAMS

2022



Melter-Filter

EZMelt 18 • EZMelt 24 • EZMelt 34

ITEM NUMBERS

- | | | |
|---|---|---|
| <input type="checkbox"/> 20504 EZMelt 18 | <input type="checkbox"/> 20508 EZMelt 24 | <input type="checkbox"/> 20512 EZMelt 34 |
| <input type="checkbox"/> 20505 EZMelt 18 | <input type="checkbox"/> 20509 EZMelt 24 | <input type="checkbox"/> 20513 EZMelt 34 |
| | <input type="checkbox"/> 20511 EZMelt 24 | |

SERIAL NUMBER

*Item Number and Serial Number are listed on a data tag attached to the equipment.
This manual should only be used with the Item Number(s) shown above.*



SUPPORT

USA/Canada 1-800-BELSHAW
International (+1) 206-322-5474

Email service@belshaw.com
Web www.belshaw.com

Belshaw[®]

EZMelt Filtration Systems

EZMelt 18 • EZMelt 24 • EZMelt 34



Operator's Manual

BELSHAW

814 44th Street NW, Suite 103, Auburn, WA 98001 USA

1-800-BELSHAW • 800-578-2547 (USA/Canada) • (+1) 206-322-5474 (International)

service@belshaw.com • www.belshaw.com

EQUIPMENT RECORD

Please provide the information below when you correspond with Belshaw about your machine.

Purchased by _____

Installed by _____

Date of Installation _____

Model number _____

Serial number _____

IN CASE OF DAMAGE TO EQUIPMENT

In case of damage to the equipment upon delivery, follow these steps immediately.

1. Inform the freight carrier. The phone number will be on the shipping receipt or label.
2. Take photographs of the equipment, both inside and outside the box or crate.
3. Do not throw away any packaging.
4. Report the damage to the distributor (or other party) from whom you bought the equipment.
5. Email your photos to the distributor (or other party) AND to Belshaw Customer Service at service@belshaw.com. Include a Belshaw 6-digit Order Number in your communications. Your Order Number should be marked on the box or crate.

IN CASE OF MISSING ITEMS

1. If possible, note the missing items on the delivery receipt of the freight carrier.
2. Take photographs of the entire shipment.
3. Follow steps 1 – 5 above.

03-17-2022 MN-0020

BELSHAW

814 44th Street Northwest, Suite 103

Auburn, WA 98001 USA

Phone: 800 578-2547 (Toll free USA/Canada) • (+1) 206-322-5474 (International)

E-mail: service@belshaw.com • www.belshaw.com

Contents

| | |
|--|-----------------------------|
| Contents | 3 |
| 1 Your EZMelt Filtration System | Operator's Manual 4 |
| 2 Operation | Operator's Manual 5 |
| | Melting and Filling 9 |
| | Filtering 11 |
| 3 Cleaning | Operator's Manual 14 |
| | Daily 14 |
| | As Needed 14 |

Technical Supplement – located after Operator's Manual**

**Printed separately for CE / European Union manuals

1 Your EZMelt Filtration System

The EZMelt filtration system is designed to be used with Belshaw donut fryers. It performs four functions:

- It melts shortening
- It holds shortening ready to use
- It supplies shortening to the fryer kettle
- It filters shortening for re-use

It is not designed to perform any other functions. The EZMelt filtration system uses electrical elements to melt shortening.

The EZMelt moves on casters. It is meant to be used on the floor. The operator of the EZMelt is expected to behave safely and to read this manual and follow its instructions and warnings.

Study the instructions and warnings in this manual carefully. A thorough understanding of how to install, maintain, and safely operate the EZMelt will prevent production delays and injuries.

To use the EZMelt safely, heed the following warnings and all other warnings that appear in this manual:

- Make sure all hose connections are tight. If you do not, you may be sprayed with hot shortening. This could result in serious burns.
- Make sure no water gets into the shortening. Water causes hot shortening to spatter, which could cause serious burns.
- Make sure the EZMelt kettle has enough room in it before draining shortening from the fryer. If you do not, shortening may overflow the kettle and get on the floor, possibly causing slips, falls, injury, burns, or even death.

- Hot shortening can cause serious burns. Make sure that proper protective gear (safety glasses, gloves and apron) are worn before filtering, disassembly and cleaning.
- Make sure the nozzle of the supply hose is securely mounted on the side of the fryer before turning on the pump. If you do not, hot shortening could spray you, resulting in serious burns. Also, shortening could get on the floor, possibly causing slips, falls, injury, burns, or even death.
- Make sure that the system and the shortening are cool before attempting any adjustments or repairs. If you do not, you may be burned.
- Be careful never to get shortening, water, or other materials on the floor. If anything does get spilled on the floor, mop it up immediately. If you do not, someone could slip or fall, be burned or injured, or even die.
- To avoid damaging the EZMelt, never use force to assemble, disassemble, operate, clean, or maintain it.
- To avoid electrocution, make sure that the power cord is not frayed or cracked and that it does not pass through any water or shortening.
- Make sure that the power cord is routed so that no one will trip over it.

2

Operation

To help familiarize you with the major parts of your EZMelt model EZ18, EZ24, or EZ34, please study the photographs below.

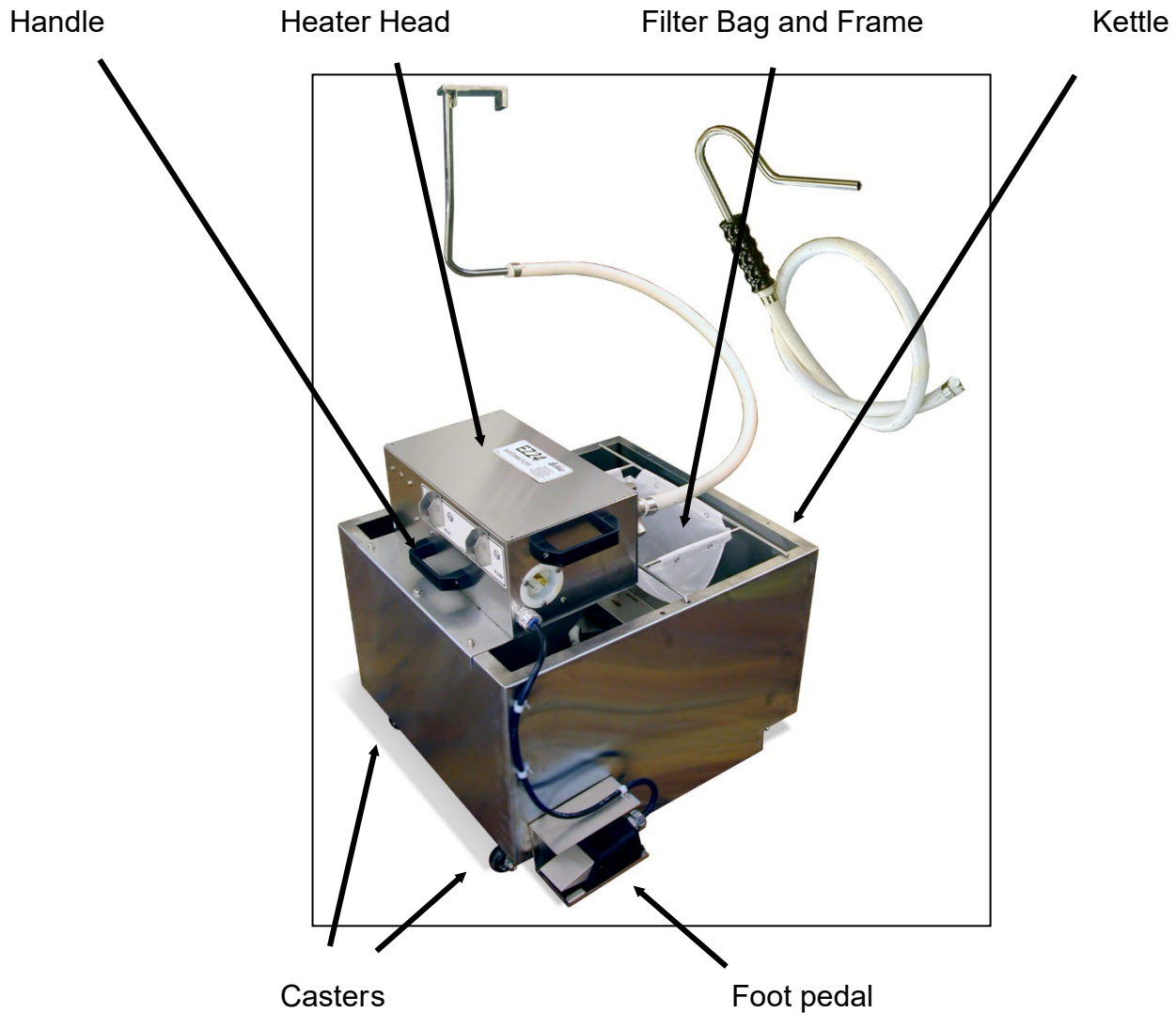


Figure 1-1. Front View.

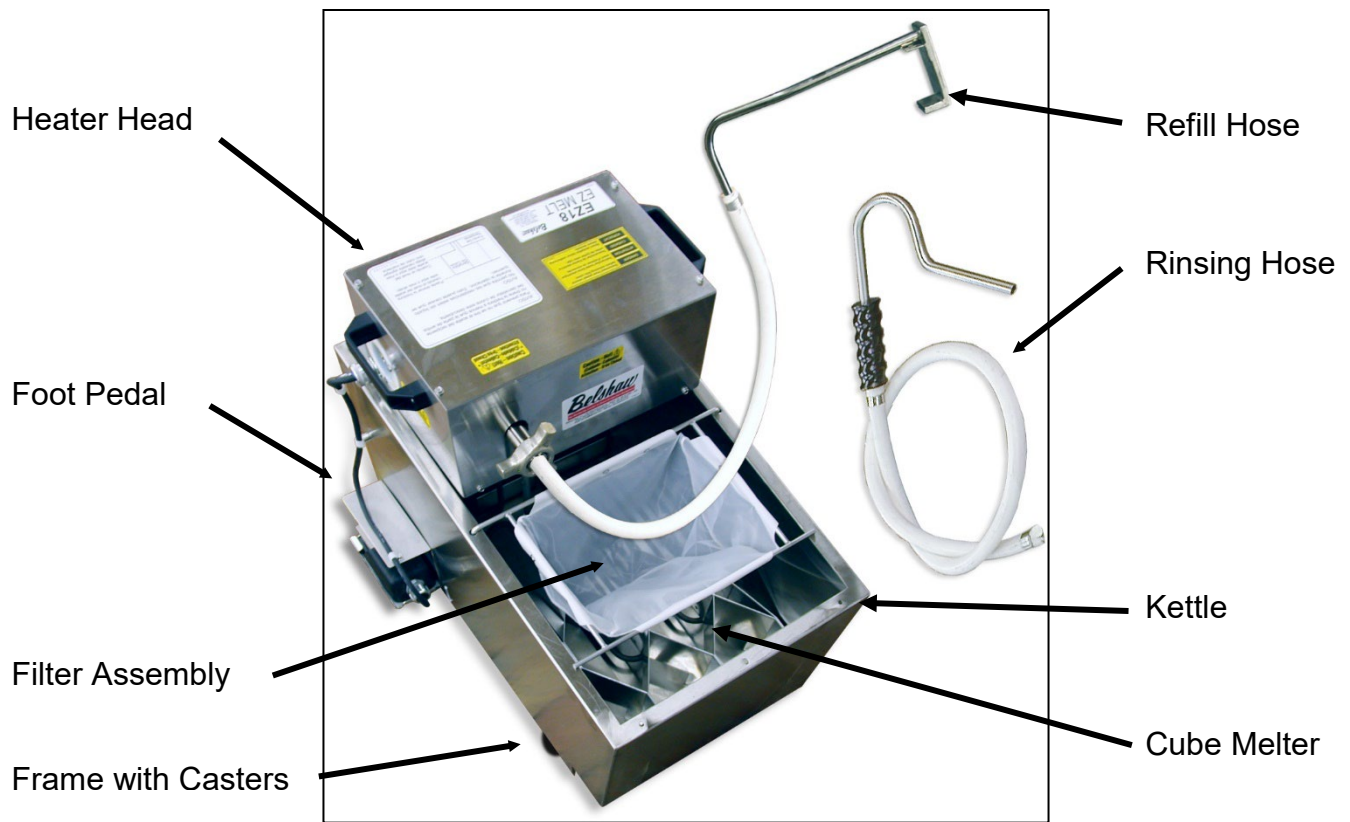


Figure 1-2. Side View.



Figure 1-3. Top View, Kettle and Elements (with Cube Melter removed).

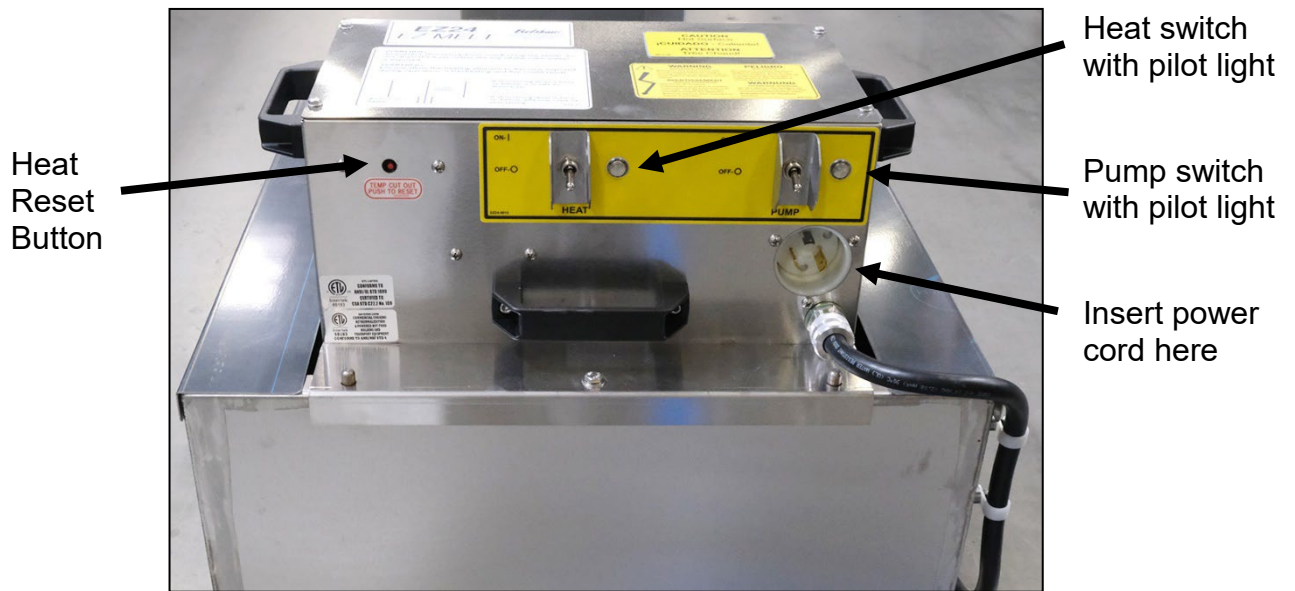


Figure 1-4. Heater head



Figure 1-5. Elements and kettle

Thoroughly clean your EZMelt before using it. Refer to Section 2, “Cleaning,” for cleaning instructions.

WARNING

Moisture causes hot shortening to spatter, which may cause serious injury. Thoroughly dry the kettle and any other parts you wash.

WARNING

To avoid electrocuting yourself or damaging the EZMelt, never allow water, steam, cleaning solution, or other liquid to enter the heater head.

Make sure that the power requirements of the EZMelt, shown on the data plate, match your power source.

Melting and Filling

1. Completely cover the heating element with shortening. There are two ways to do this:
 - Pre-melt some shortening in a pan on the stove and pour it into the kettle to cover the element.
 - Pack solid shortening tightly around the heating element and bulbs. Do not leave any air spaces. Cover the heating element at least 2²/₅ cm. (See Figure 1-6)

WARNING

Air spaces can cause the shortening to overheat and catch on fire.

2. Install the cube melter in the kettle, opposite the heater head. Push the cube melter through the shortening so its legs rest on the bottom



of the kettle. (See Figures 1-7 & 1-8.)

Figure 1-6. Packing Solid Shortening in the Kettle.

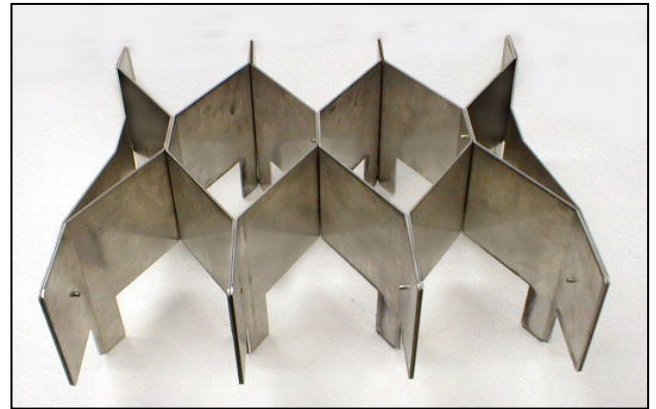


Figure 1-7. Cube Melter

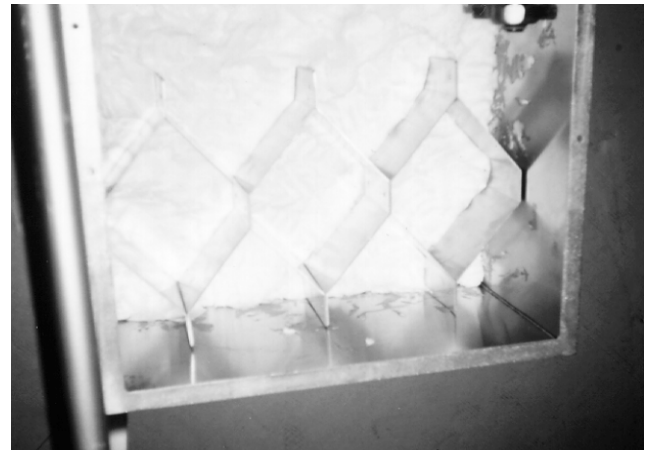


Figure 1-8. Installing the Cube Melter.

3. Position the EZMelt near the fryer.
4. Install the supply hose. Follow these steps:
 - a. Attach the hose to the pump outlet by hand-tightening the hose connector.
 - b. Mount the nozzle of the hose on the edge of the fryer kettle with the opening inside the kettle.

5. Make sure that the HEAT and PUMP switches are in the OFF position. Connect the EZMelt to the power source.

To avoid damaging the heating element, make sure it is completely covered with shortening before you turn the heater on.

6. Turn the machine on using the HEAT switch. When the heat is on, the heating element melts shortening at 250°F/121°C. The heat must also be on to operate the pump.
7. Turn the pump on using the PUMP switch.
8. When you want to supply shortening to the fryer, press the foot pedal.

WARNING

To avoid burning yourself, never touch the nozzle while the machine is in use.

9. When the fryer has enough shortening in it, release the foot pedal.
10. As needed, add shortening to the kettle, one cube at a time. Always add a cube if the shortening level drops to the tops of the legs of the cube melter. (See Figure 1-9 & 1-9A.)

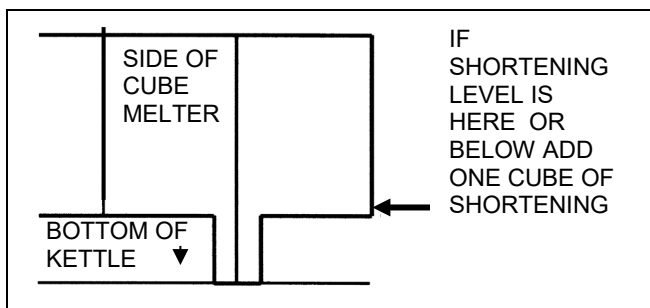


Figure 1-9.
When to Add a Cube of Shortening.

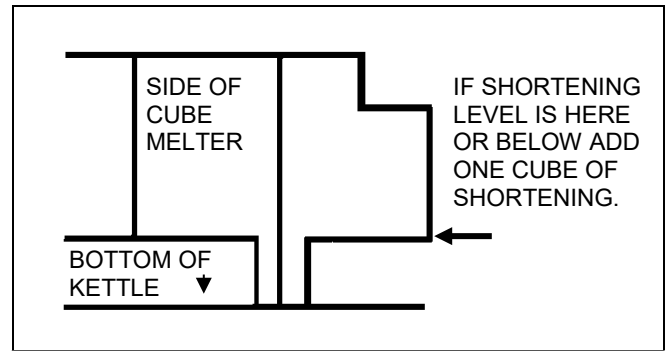


Figure 1-9A. **(EZ34 ONLY)** When to Add a Cube of Shortening.

To add a cube of shortening, follow these steps:

1. Position the filter bag and frame so you can add shortening. The edge of the kettle has one or two sets of holes in it. Use the set of holes that is nearer to the heater head. When two of the filter frame's pins rest in these holes, the filter bag and frame hangs vertically. (See Figure 1-10.)

Figure 1-10. Positioning the Filter Frame for



Melting.

- b. Place a solid cube of shortening on the cube melter. Let one cube melt and be pumped out before adding another cube. Do not overload the EZMelt.

WARNING

Be careful with hot shortening. Always wear proper protective gear (face shield, apron and gloves) when filtering, disassembling and cleaning

Filtering

1. Turn the fryer off. Allow the shortening to cool to 250°F/121°C. Because hot shortening is dangerous, FILTER SHORTENING AT THE LOWEST TEMPERATURE THAT WORKS. Hot shortening may also trip the pump motor.

WARNING

Maximum filtering temperature is 325°F/163°C

WARNING

Hot shortening may cause serious injury.

2. Turn the EZMelt off. Make sure that both the HEAT and PUMP switches are in the OFF position.
3. Make sure that the top of the cube melter is exposed.

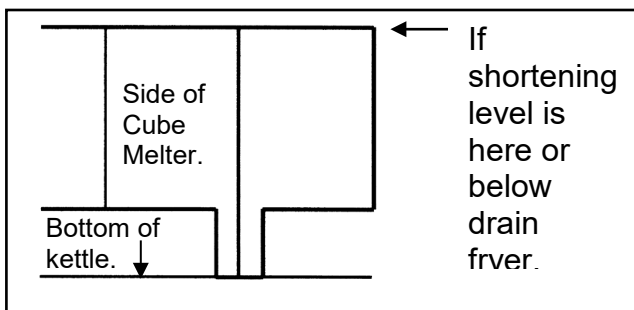


Figure 1-11. When to Drain the Fryer.

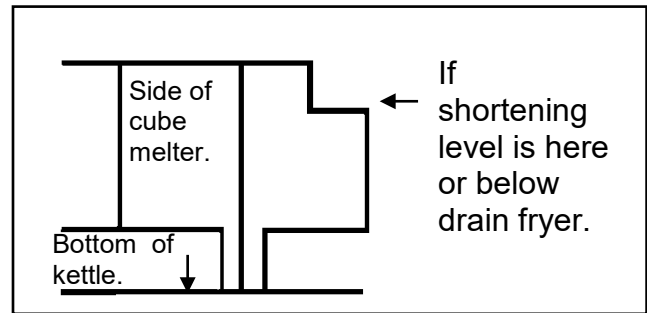


Figure 1-11A. **(EZ-34 ONLY)** When to Drain the Fryer.

WARNING

When you begin to drain the fryer, the shortening in the EZMelt must be shallow enough for the top of the cube melter to be exposed. If the shortening is deeper it might overflow when you drain the fryer, thus causing burns or other serious injury.

4. Position the shortening filter bag and frame on the EZMelt kettle. The edge of the kettle has one or two sets of holes in it. Use the set of holes that is farther from the heater head. When two of the filter frame's pins rest in these holes, the filter bag and frame rests horizontally on the end of the kettle. (See Figure 1-12.)

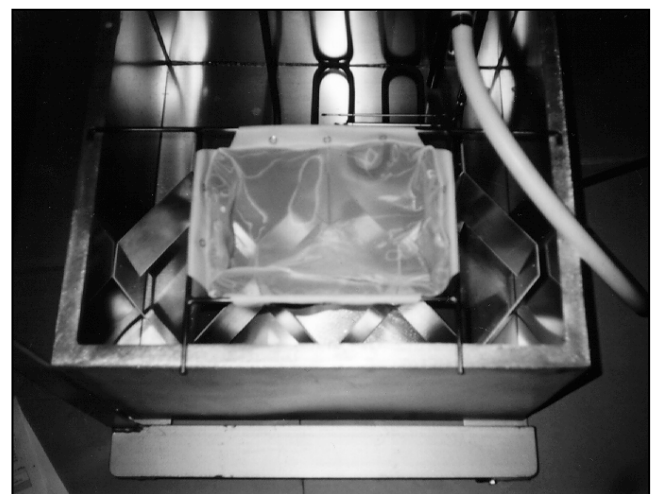


Figure 1-12. Positioning the Filter bag and frame for Filtering.

5. Disconnect the supply hose from the hose connector. Hold the two ends of the hose up so shortening does not drip out. Hang hose vertically over a pan so the shortening will drip into the pan.
6. Attach the rinsing hose securely to the hose connector. (See Figure 1-13.)

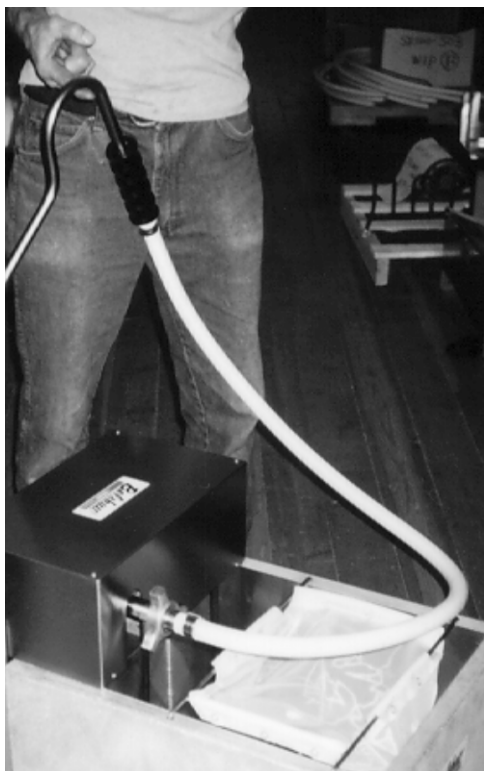


Figure 1-13. Rinsing Hose.

7. Position the EZMelt so the filter is directly under the drain in the fryer kettle.
8. Reach under the table and slowly open the fryer's drain valve. For best results, do not open the drain valve more than half-way.

FOR BEST RESULTS

Do not open the drain valve more than half-way. If the EZMelt filter bag contains leftover debris and shortening is drained too quickly, the filter bag may clog and overflow.

9. Move the HEAT and PUMP switches of the EZMelt to the ON position.
10. Hold the insulated handle of the hose. Direct the nozzle into the fryer kettle. Press the foot pedal and rinse the kettle with shortening. Do not let shortening splash out of the kettle!

WARNING

To avoid burning yourself, never hold or touch the metal portion of the nozzle while the machine is in use. Wear protective gloves.

WARNING

Thoroughly clean and dry the floor if shortening, water, or other materials are spilled. Materials spilled on the floor may cause serious injury and loss of life.

11. After you have rinsed all the loose particles out of the fryer kettle, release the foot pedal.
12. After the shortening has drained out of the fryer kettle and through the EZMelt filter, close the drain valve.
13. Turn the EZMelt off. Make sure that both the HEAT and PUMP switches are in the OFF position.
14. Disconnect the rinsing hose assembly. Hold the two ends of the hose up so shortening does not drip out. Hang the hose vertically over a pan so shortening will drip into the pan.
15. Bring the supply hose back to the EZMelt, holding the two ends of the hose up so shortening does not drip out.
16. Securely attach the supply hose to the hose connector. Make sure the outlet nozzle is securely mounted to the fryer, with the opening inside the kettle.

-
17. Move the HEAT and PUMP switches to the ON position. Press the foot pedal to supply filtered shortening to the fryer.
 18. Before you filter shortening again, shake out the EZMelt filter. Follow these steps:
 - a. Allow the filter bag and frame to cool to the touch.
 - b. Lift off the filter bag and frame, holding it by the frame.
 - c. Hold the filter bag and frame up side down over a garbage can and shake the sediment off of it.
 - d. **DO NOT** rinse the filter.

| WARNING |
|--|
| Rinsing the filter could cause water to drop into the kettle. Hot shortening could spatter and cause serious injury. |

- d. Put the filter bag and frame back on the EZMelt.

To order replacement filters for your EZMelt, call Belshaw.

3

Cleaning

Daily

WARNING

Be careful with hot shortening. Always wear proper protective gear (safety glasses, apron and gloves) when filtering, disassembling and cleaning

Clean the EZMelt after every use. Follow these steps:

1. Turn on the heat and the pump.
2. Press the foot pedal to pump shortening out of the EZMelt and into the fryer.
3. When you cannot pump any more shortening out of the EZMelt, release the foot pedal. Turn off the heat and the pump.
4. Disconnect the EZMelt from the power source.
5. Disconnect the filter hose assembly while still hot and drain any remaining shortening back into the filter kettle to prevent shortening from hardening in the hose.
6. Store the hose hanging vertically with the lower end of the hose in a metal container to catch any shortening that may drip.

WARNING

Hot shortening can cause serious injury.

7. Clean the EZMelt filter. Follow these steps:

- a. Allow the filter bag and frame to cool to the touch.
- b. Lift off the filter bag and frame, holding it by the frame.
- c. Invert the filter bag and frame over a sink or garbage can and shake out the sediment.
- d. If the sediment shakes out of the bag, replace the bag and frame in the EZMelt.
- e. If any debris or sludge remains in the filter bag, unsnap the filter to remove it from the filter frame. Rinse the remaining shortening and crumbs off of the filter. Allow to dry completely, so water does not come into contact with shortening.

WARNING

Thoroughly clean and dry the floor if shortening, water, or other materials are spilled. Materials spilled on the floor may cause serious injury and loss of life.

As Needed

1. Remove the cube melter.
2. Loosen the two fasteners at the back of the heater head, lift it off the kettle and place it in a clean safe place. The foot valve and cord will unsnap from the frame. See Figure 2-1.



Figure 2-1. Removing the Heater Head.
(Place heater head as shown above so no damage is done to the element.)

WARNING

Do not touch the heating element! It is very hot and will burn you.

3. Remove the kettle from the frame. You must remove it from the rear.

4. Pour any shortening remaining in the kettle into a metal container. If it is too heavy or awkward for you to lift by yourself, get someone to help you.

WARNING

Thoroughly clean and dry the floor if shortening, water, or other materials are spilled. Materials spilled on the floor may cause serious injury and loss of life.

5. Scrape out any residue and discard it.
6. Wash the kettle, the cube melter, and the filter frame with warm, soapy water.
7. Dry all the parts completely. The kettle and all other parts must be completely dry before you use the EZMelt again.

WARNING

Failure to dry the kettle and all parts of the EZMelt completely may cause shortening to spatter or erupt. Shortening will overflow the EZMelt and may result in fire, injury, or death.

8. Re-assemble the EZMelt.

Belshaw[®]

EZMelt Filtration Systems

EZMelt 18 • EZMelt 24 • EZMelt 34



Technical Supplement

BELSHAW

814 44th Street NW, Suite 103, Auburn, WA 98001 USA

1-800-BELSHAW • 800-578-2547 (USA/Canada) • (+1) 206-322-5474 (International)

service@belshaw.com • www.belshaw.com

EQUIPMENT RECORD

Please provide the information below when you correspond with Belshaw about your machine.

Purchased by _____

Installed by _____

Date of Installation _____

Model number _____

Serial number _____

IN CASE OF DAMAGE TO EQUIPMENT

In case of damage to the equipment upon delivery, follow these steps immediately.

1. Inform the freight carrier. The phone number will be on the shipping receipt or label.
2. Take photographs of the equipment, both inside and outside the box or crate.
3. Do not throw away any packaging.
4. Report the damage to the distributor (or other party) from whom you bought the equipment.
5. Email your photos to the distributor (or other party) AND to Belshaw Customer Service at service@belshaw.com. Include a Belshaw 6-digit Order Number in your communications. Your Order Number should be marked on the box or crate.

IN CASE OF MISSING ITEMS

1. If possible, note the missing items on the delivery receipt of the freight carrier.
2. Take photographs of the entire shipment.
3. Follow steps 1 – 5 above.

03-17-2022 MN-0020

BELSHAW

814 44th Street Northwest, Suite 103

Auburn, WA 98001 USA

Phone: 800 578-2547 (Toll free USA/Canada) • (+1) 206-322-5474 (International)

E-mail: service@belshaw.com • www.belshaw.com

Contents

| | | | |
|----------|---|------------------------------------|------------------|
| 1 | <i>Your EZMelt filtration system</i> | <i>Technical Supplement</i> | <i>4</i> |
| 2 | <i>Installation</i> | <i>Technical Supplement</i> | <i>5</i> |
| 3 | <i>Troubleshooting</i> | <i>Technical Supplement</i> | <i>9</i> |
| 4 | <i>Diagrams and Parts Lists</i> | <i>Technical Supplement</i> | <i>11</i> |

Operator's Manual – located before Technical Supplement**

**Printed separately for CE / European Union manuals

1 Your EZMelt filtration system

The EZMelt filtration system is designed to be used with Belshaw donut fryers. It performs four functions:

- It melts shortening
- It holds shortening ready to use
- It supplies shortening to the fryer kettle
- It filters shortening for re-use

It is not designed to perform any other functions. The EZMelt filtration system uses electrical elements to melt shortening.

The EZMelt moves on casters. It is meant to be used on the floor. The operator of the EZMelt is expected to behave safely and to read this manual and follow its instructions and warnings.

Study the instructions and warnings in this manual carefully. A thorough understanding of how to install, maintain, and safely operate the EZMelt will prevent production delays and injuries.

To use the EZMelt safely, heed the following warnings and all other warnings that appear in this manual:

- Make sure all hose connections are tight. If you do not, you may be sprayed with hot shortening. This could result in serious burns.
- Make sure no water gets into the shortening. Water causes hot shortening to spatter, which could cause serious burns.
- Make sure the EZMelt kettle has enough room in it before draining shortening from the fryer. If you do not, shortening may overflow the kettle and get on the floor, possibly causing slips, falls, injury, burns, or even death.

- Hot shortening can cause serious burns. Make sure that proper protective gear (safety glasses, gloves and apron) are worn before filtering, disassembly and cleaning.
- Make sure the nozzle of the supply hose is securely mounted on the side of the fryer before turning on the pump. If you do not, hot shortening could spray you, resulting in serious burns. Also, shortening could get on the floor, possibly causing slips, falls, injury, burns, or even death.
- Make sure that the system and the shortening are cool before attempting any adjustments or repairs. If you do not, you may be burned.
- Be careful never to get shortening, water, or other materials on the floor. If anything does get spilled on the floor, mop it up immediately. If you do not, someone could slip or fall, be burned or injured, or even die.
- To avoid damaging the EZMelt, never use force to assemble, disassemble, operate, clean, or maintain it.
- To avoid electrocution, make sure that the power cord is not frayed or cracked and that it does not pass through any water or shortening.
- Make sure that the power cord is routed so that no one will trip over it.

2

Installation

To help familiarize you with the major parts of your EZMelt 18, EZMelt 24, or EZMelt 34, please study the photographs below.

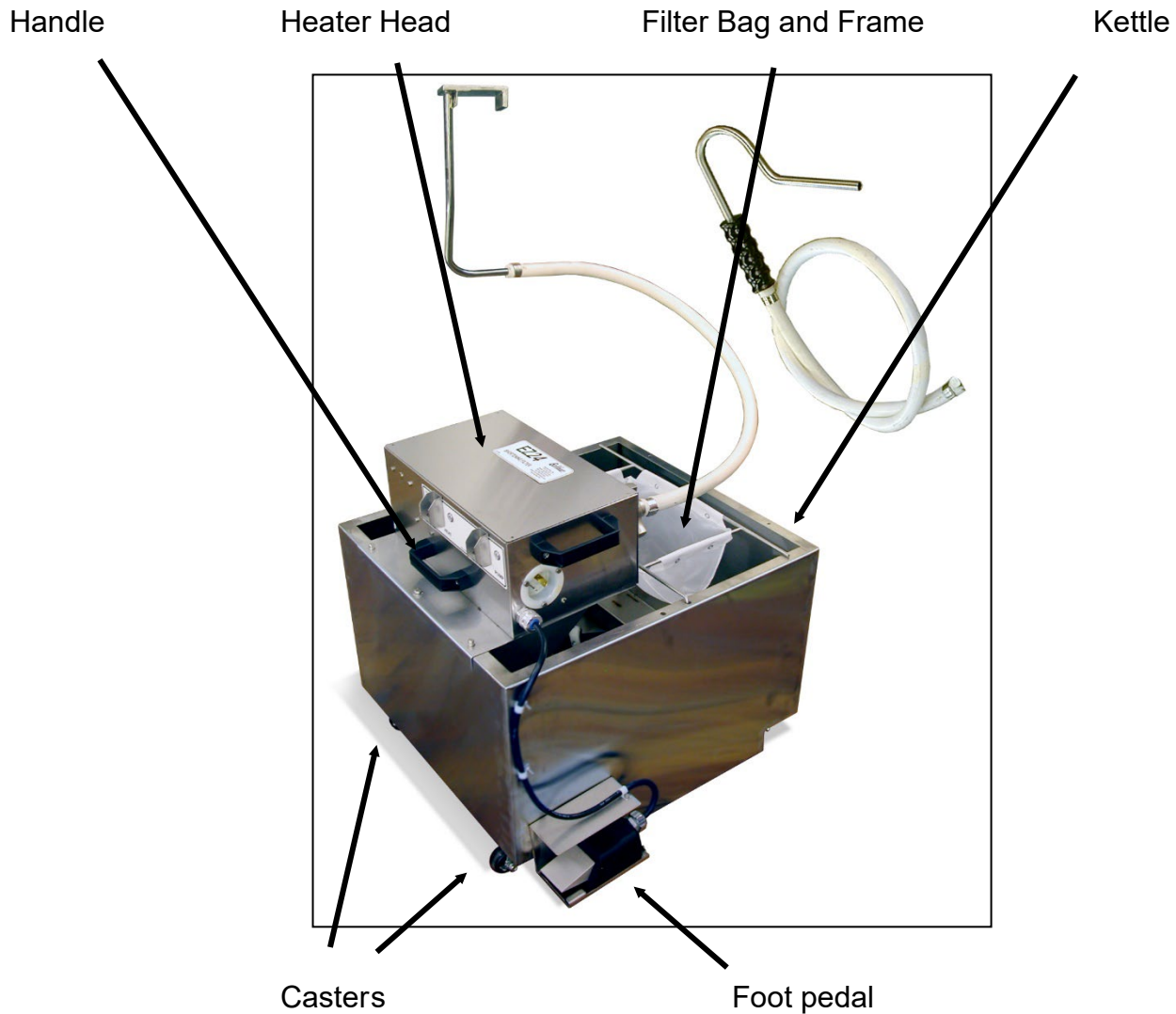


Figure 1-1. Front View.

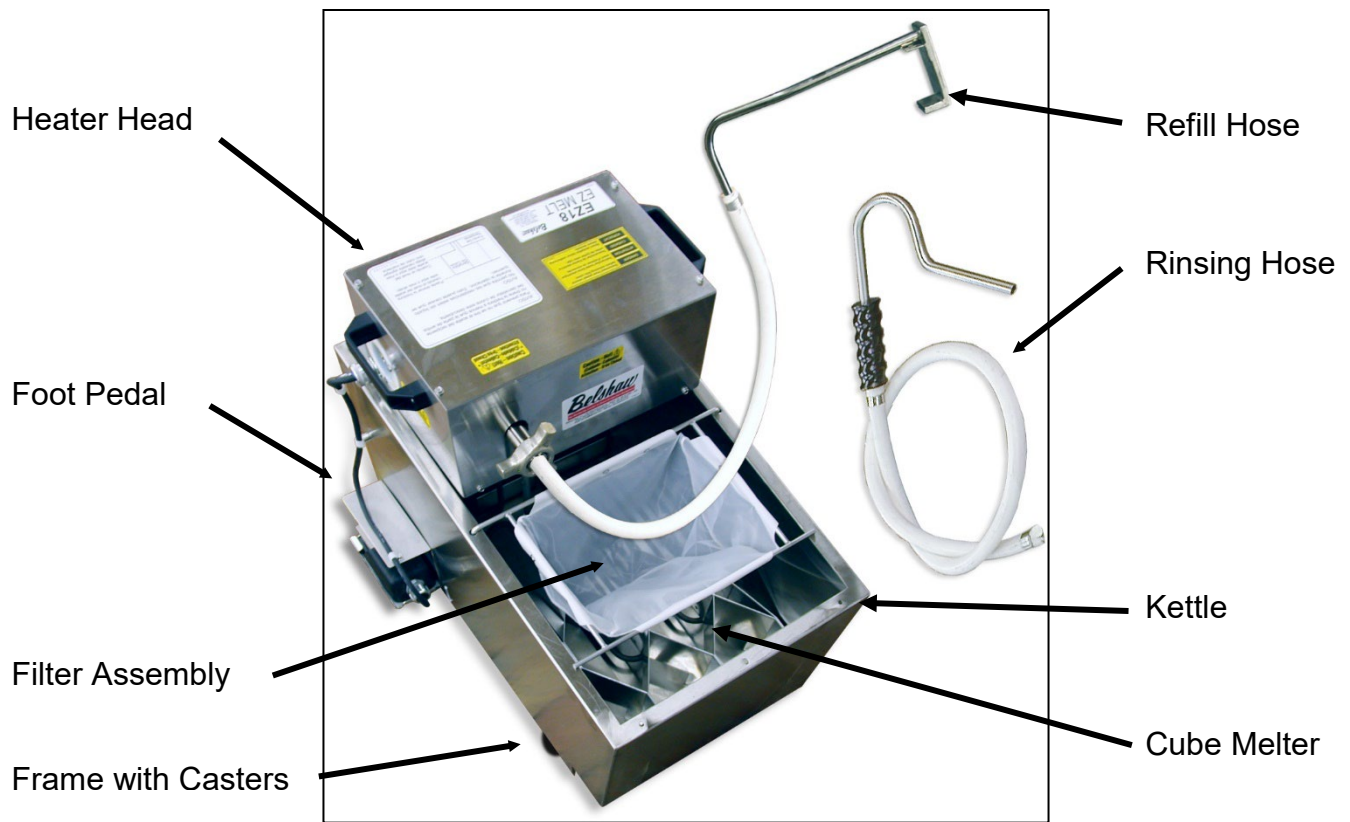


Figure 1-2. Side View.



Figure 1-3. Top View, Kettle and Elements (with Cube Melter removed).

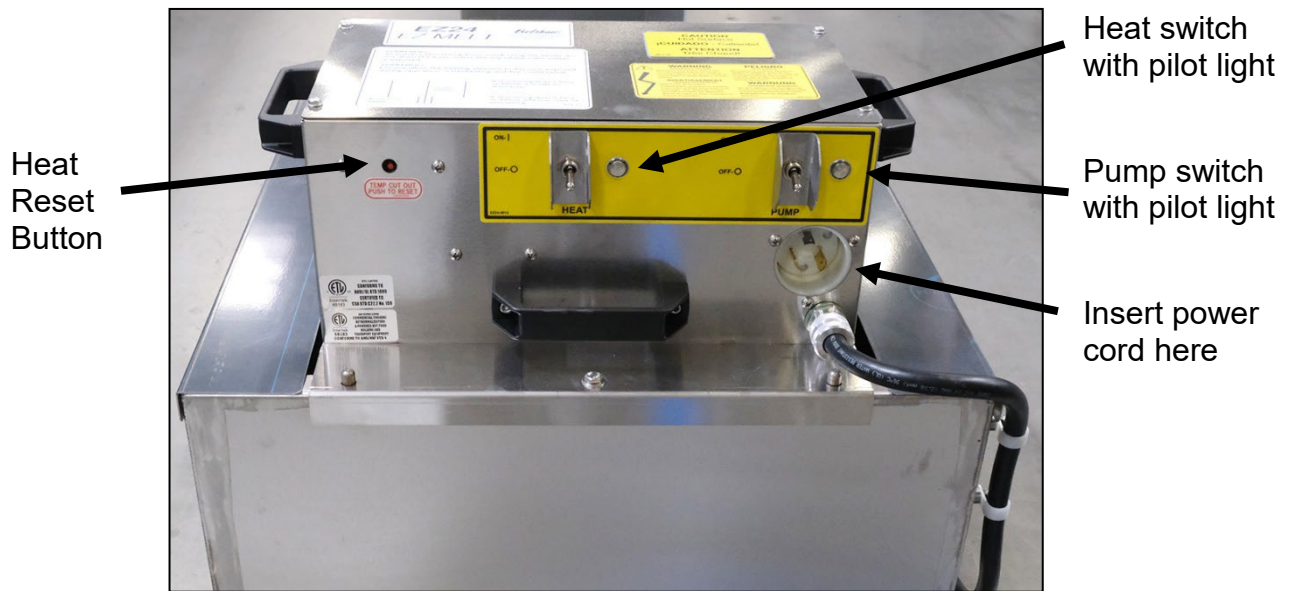


Figure 1-4. Heater head



Figure 1-5. Elements and kettle

Thoroughly clean your EZMelt before using it. Refer to Section 2, “Cleaning,” for cleaning instructions.

WARNING

Moisture causes hot shortening to spatter, which may cause serious injury. Thoroughly dry the kettle and any other parts you wash.

WARNING

To avoid electrocuting yourself or damaging the EZMelt, never allow water, steam, cleaning solution, or other liquid to enter the heater head.

Make sure that the power requirements of the EZMelt, shown on the data plate, match your power source.

3

Troubleshooting

This section is designed as an aid in troubleshooting, not as a substitute for a qualified technician. You may encounter a problem with your EZMelt that is not covered in this section, or you may try the remedies suggested here and find that they do not correct the problem. In either case, feel free to call Belshaw at 800-578-2547 (USA/Canada) or (+1)206-322-5474 (International). One of our technical support representatives will be happy to help you. When you call, please specify the following:

- The model number of the machine.
- The serial number of the machine.
- The voltage, phase, and hertz (cycle) of the machine.

CAUTION

If you perform repairs yourself or have them performed by anyone other than Belshaw Bros. or a service technician authorized by Belshaw Bros., you do so at your own risk.

Following is a troubleshooting chart to help you identify and solve some basic problems.

WARNING

Disconnect the machine from the power source before disassembling, repairing, or wiring.

THE SHORTENING DOES NOT FLOW FREELY THROUGH THE FILTER SYSTEM

| Possible Causes | What To Do |
|--|---|
| The hose is twisted or bent. | Straighten the hose. |
| Solid shortening is building up inside the hose and pump | Make sure the heat is turned on, so that shortening cannot become solid. While the EZMelt is idle, hang the hoses vertically with a container underneath them, to allow any shortening inside to empty out. |
| WARNING | To avoid being burned, before doing any of the following, turn off the EZMelt and allow the shortening to cool. |
| The hose is clogged with shortening. | To empty a blocked hose, put it in a proofer at temperature 120°F/50°C and wait for the shortening to melt inside the hose. Then pour the shortening out. |
| The drain tube is clogged with solid shortening. | Remove the drain tube and soak it in warm or hot water to help release the clogged shortening. |
| The pickup tube is clogged with residue. | Remove the pickup tube and clean it. |

THE PUMP MOTOR WILL NOT RUN

| Possible Causes | What To Do |
|---|--|
| The connection of the power cord to the power source is faulty. | Make sure the power cord is fully plugged in to a proper power source. |
| The circuit breaker has been tripped. | Press the reset button. If the problem persists, consult your Belshaw dealer, or call Belshaw. |
| WARNING | To avoid being burned, before doing any of the following, turn off the EZMelt and allow the shortening to cool. |
| The power switch is defective. | Repair or replace the power switch. |
| The motor is defective. | Repair or replace the motor. |

4 Diagrams and Parts Lists

See following pages.

Parts and Electrical Diagrams

Mechanical and electrical diagrams for EZMelt filtration systems with Item Numbers 20504, 20505, 20508, 20509, 20511, 20512, and 20513 are indicated in the table below.

ABOUT ITEM NUMBERS:

All machines are identified by an Item Number. The Item Number is located on a data tag attached to machine. You need to know your fryer's Item Number to identify parts diagrams for that fryer. Find out your item number, and mark it on the front cover of this manual, and also immediately below.

RECORD YOUR ITEM NUMBER BELOW:

| MARK FOR YOUR EZMELT | ITEM NUMBER | MODEL | VOLTS | HERTZ | PHASE |
|----------------------------|--------------|-----------|----------|----------|-------|
| <input type="checkbox"/> | 20504 | EZMELT 18 | 120V | 50/60 hz | 1 |
| <input type="checkbox"/> | 20505 | EZMELT 18 | 208-240V | 50/60 hz | 1 |
| <input type="checkbox"/> | 20508 | EZMELT 24 | 120V | 50/60 hz | 1 |
| <input type="checkbox"/> | 20509 | EZMELT 24 | 208-240V | 50/60 hz | 1 |
| <input type="checkbox"/> | 20511 | EZMELT 24 | 208-240V | 50/60 hz | 1 |
| <input type="checkbox"/> | 20512 | EZMELT 34 | 120V | 50/60 hz | 1 |
| <input type="checkbox"/> | 20513 | EZMELT 34 | 208-240V | 50/60 hz | 1 |

For Item Numbers not listed, contact Belshaw Service at service@belshaw.com or call 1-800-578-2547 (US/Canada) or (+1)206-322-5474 (International).

DIAGRAM: EZ18-2000

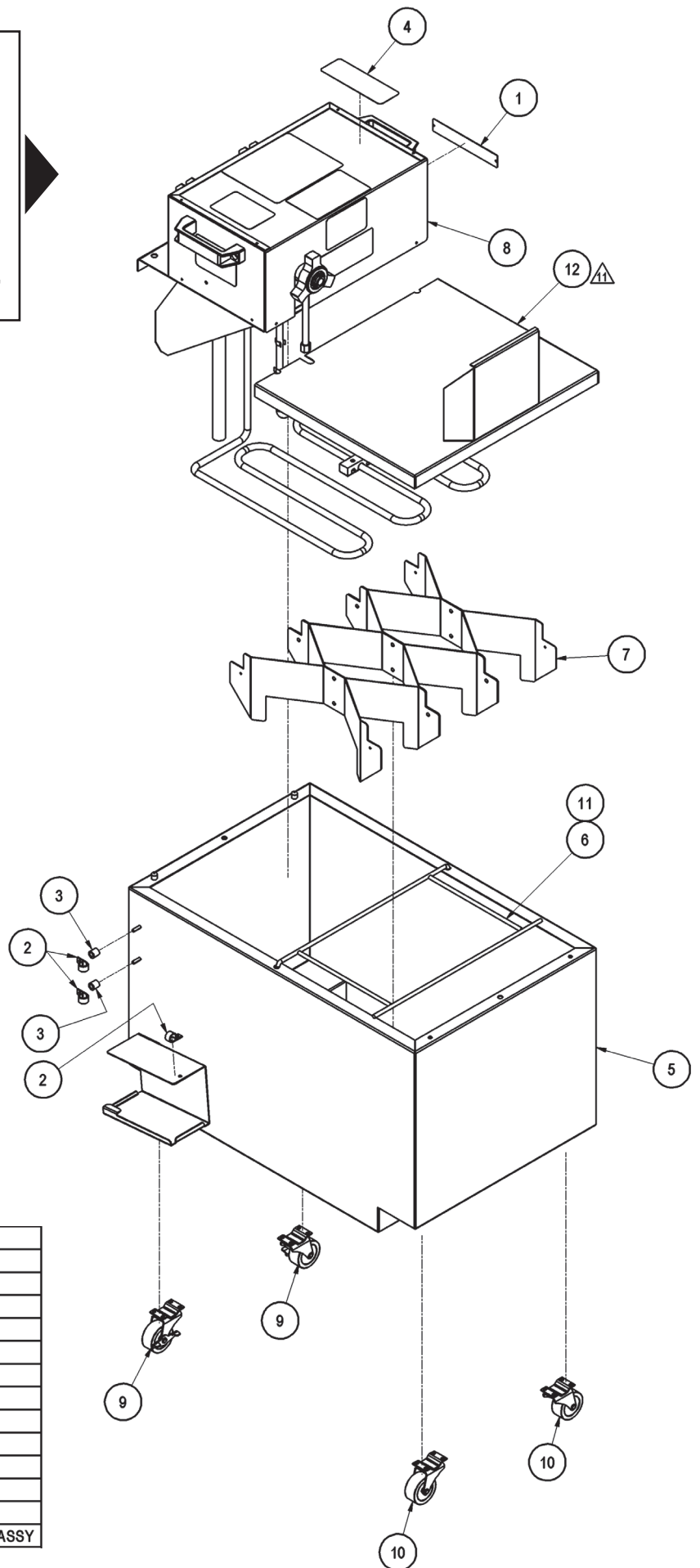
USE THIS DIAGRAM FOR

MODEL: EZMelt 18

ITEM NUMBER:

20504, 20505

TO IDENTIFY MODEL AND ITEM NUMBER,
SEE DATA TAG ON CONTROL PANEL



BILL OF MATERIAL

| ITEM | QTY | PART NUMBER | DESCRIPTION |
|------|-----|-------------|-------------------------------|
| 1 | 1 | 0158 | DATA PLATE |
| 2 | 3 | 990-0651 | WIRE HOLDER 1/2" |
| 3 | 2 | C2030G-0140 | STAND-OFF; CONDUIT |
| 4 | 1 | EZ18-0011 | LABEL, NAMEPLATE |
| 5 | 1 | EZ18-0502 | KETTLE, WELDMENT |
| 6 | 1 | EZ18-0503 | FILTER HOLDER, WELDMENT |
| 7 | 1 | EZ18-0504 | CUBE MELTER ASSY |
| 8 | 1 | EZ24-1000 | MOTOR ENCLOSURE ASSY |
| 9 | 2 | EZ34-0017 | CASTER, SWIVEL W/BRAKE, 2" |
| 10 | 2 | SF100-0001 | 2" CASTER |
| 11 | 1 | SM100-0002 | FILTER BAG (NOT SHOWN) |
| 12 | 1 | SF18-8000 | COVER, SHORTENING FILTER ASSY |

DIAGRAM: EZ24-2000

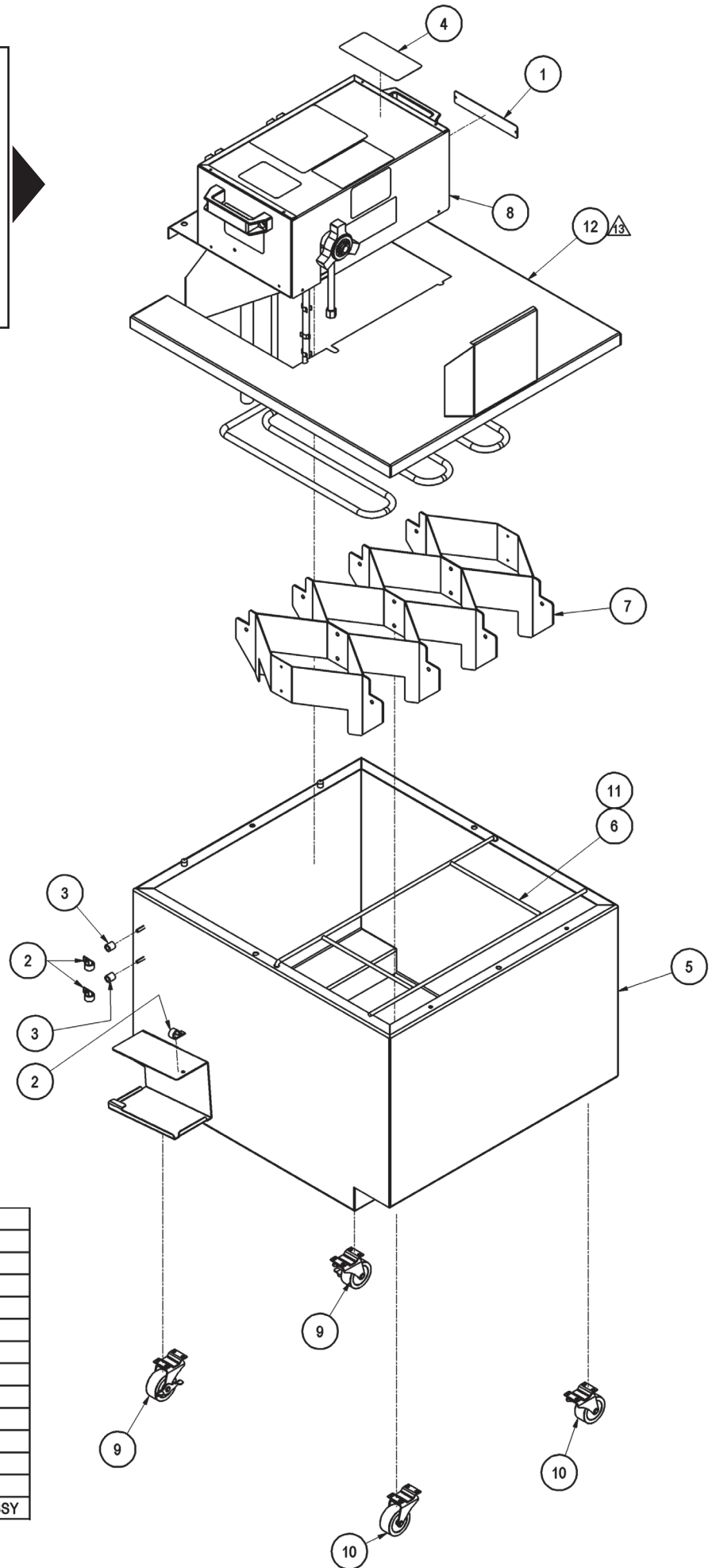
USE THIS DIAGRAM FOR

MODEL: EZMelt 24

ITEM NUMBER:

20508, 20509, 20511

TO IDENTIFY MODEL AND ITEM NUMBER,
SEE DATA TAG ON CONTROL PANEL



| BILL OF MATERIAL | | | |
|------------------|-----|-------------|------------------------------|
| ITEM | QTY | PART NUMBER | DESCRIPTION |
| 1 | 1 | 0158 | DATA PLATE |
| 2 | 3 | 990-0651 | WIRE HOLDER 1/2" |
| 3 | 2 | C2030G-0140 | STAND-OFF; CONDUIT |
| 4 | 1 | EZ24-0016 | LABEL, NAMEPLATE |
| 5 | 1 | EZ24-0502 | KETTLE WELDMENT |
| 6 | 1 | EZ24-0503 | FILTER HOLDER, WELDMENT |
| 7 | 1 | EZ24-0504 | CUBE MELTER ASSY |
| 8 | 1 | EZ24-1000 | MOTOR ENCLOSURE ASSY |
| 9 | 2 | EZ34-0017 | CASTER, SWIVEL W/BRAKE, 2" |
| 10 | 2 | SF100-0001 | 2" CASTER |
| 11 | 1 | SM100-0002 | FILTER BAG |
| 12 | 1 | SF24-8000 | COVER SHORTENING FILTER ASSY |

DIAGRAM: EZ34-2000

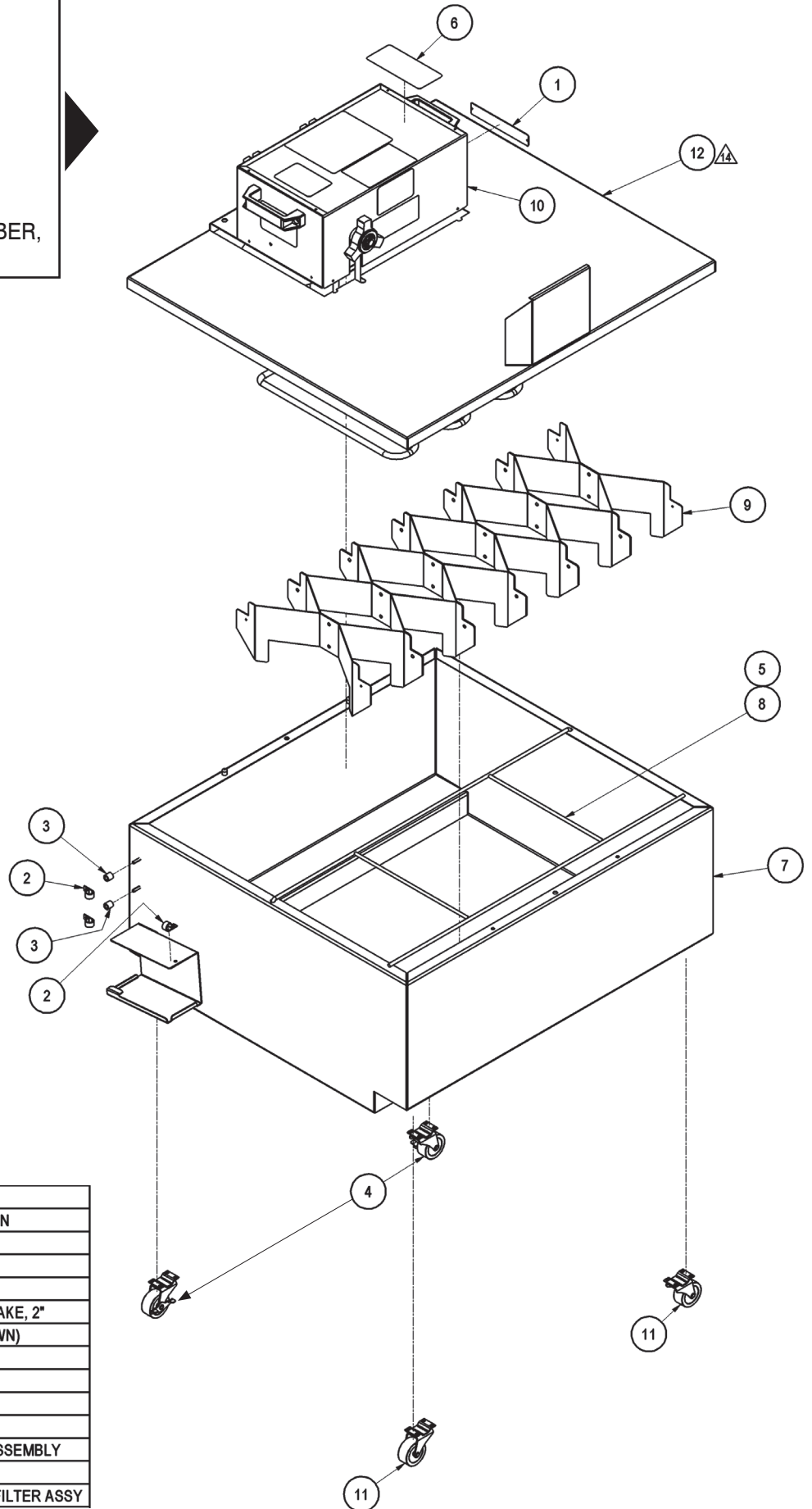
USE THIS DIAGRAM FOR

MODEL: EZMelt 34

ITEM NUMBER:

20512, 20513

TO IDENTIFY MODEL AND ITEM NUMBER,
SEE DATA TAG ON CONTROL PANEL



BILL OF MATERIAL

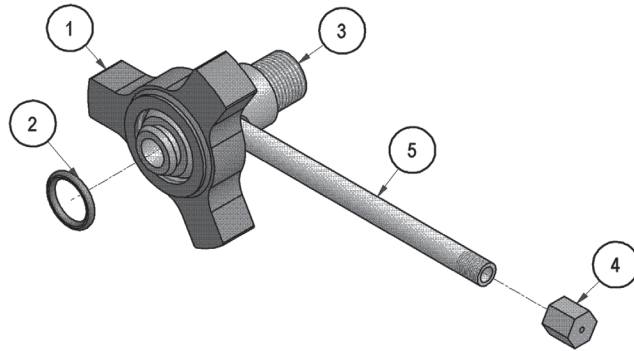
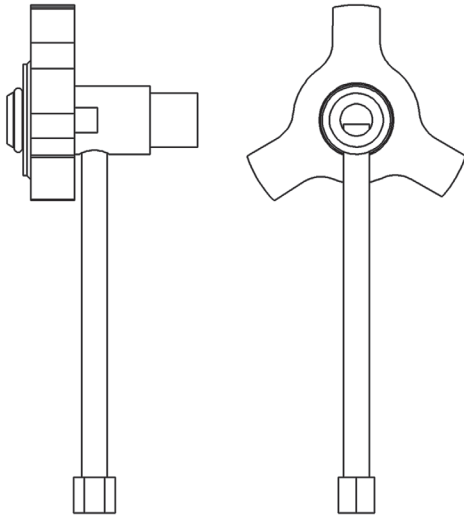
| ITEM | QTY | PART NUMBER | DESCRIPTION |
|------|-----|-------------|-------------------------------|
| 1 | 1 | 0158 | DATA PLATE |
| 2 | 3 | 990-0651 | WIRE HOLDER 1/2" |
| 3 | 2 | C2030G-0140 | STAND-OFF; CONDUIT |
| 4 | 2 | EZ34-0017 | CASTER, SWIVEL W/BRAKE, 2" |
| 5 | 1 | EZ34-0027 | FILTER BAG (NOT SHOWN) |
| 6 | 1 | EZ34-0036 | LABEL, NAMEPLATE |
| 7 | 1 | EZ34-0502 | KETTLE WELDMENT |
| 8 | 1 | EZ34-0503 | WLDT; FILTER HOLDER |
| 9 | 1 | EZ34-0504 | ASSY; CUBE MELTER |
| 10 | 1 | EZ34-1000 | MOTOR ENCLOSURE ASSEMBLY |
| 11 | 2 | SF100-0001 | 2" CASTER |
| 12 | 1 | SF34-8000 | COVER, SHORTENING FILTER ASSY |

DIAGRAM: SM100-0505

USE THIS DIAGRAM FOR

MODELS: EZMelt 18, EZMelt 24, EZMelt 34
All Item Numbers

| BILL OF MATERIAL | | | |
|------------------|-----|-------------|--------------------------|
| ITEM | QTY | PART NUMBER | DESCRIPTION |
| 1 | 1 | SF100-0022 | COUPLING |
| 2 | 1 | SF100-0031 | "O" RING |
| 3 | 1 | SM100-0021 | PUMP UNION WITH HOLE |
| 4 | 1 | SM100-0025 | LINE BLEEDER CAP |
| 5 | 1 | 951-0001-N6 | 1/8 X 6 NIPPLE, PIPE BMI |

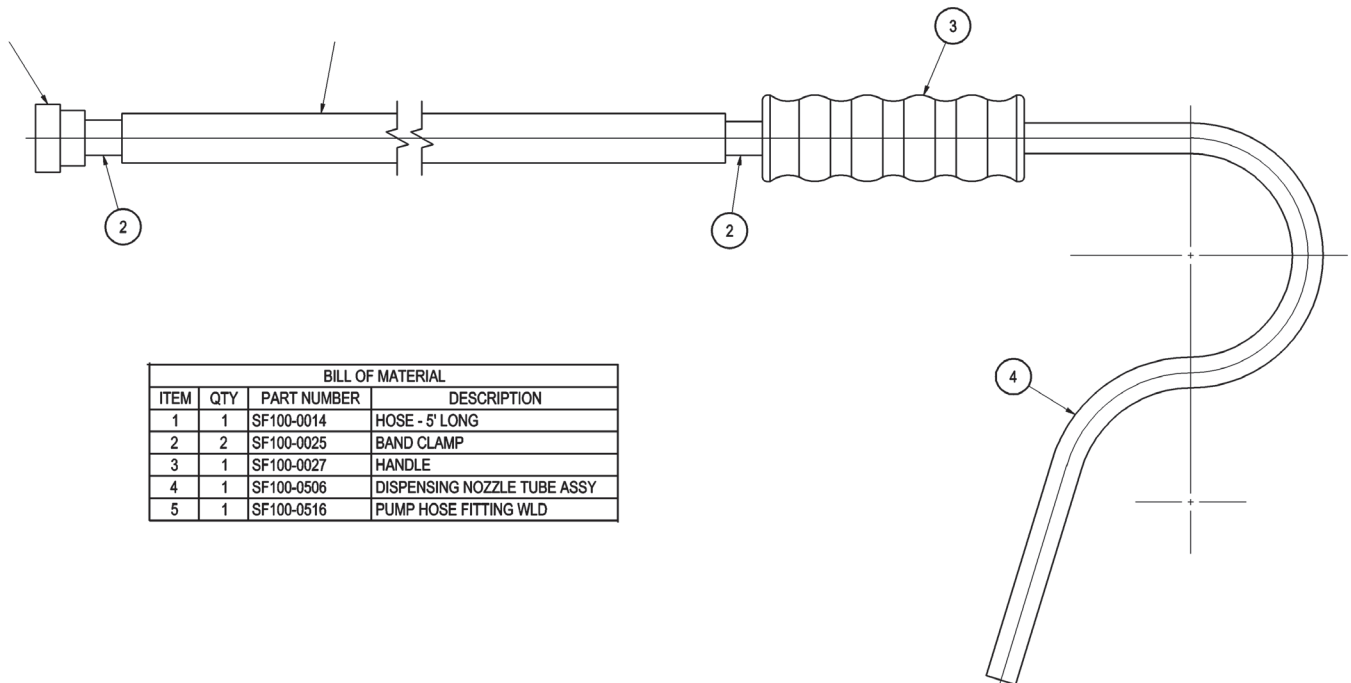


ISOMETRIC VIEW

DIAGRAM: SF100-0503

USE THIS DIAGRAM FOR

MODELS: EZMelt 18, EZMelt 24, EZMelt 34
All Item Numbers



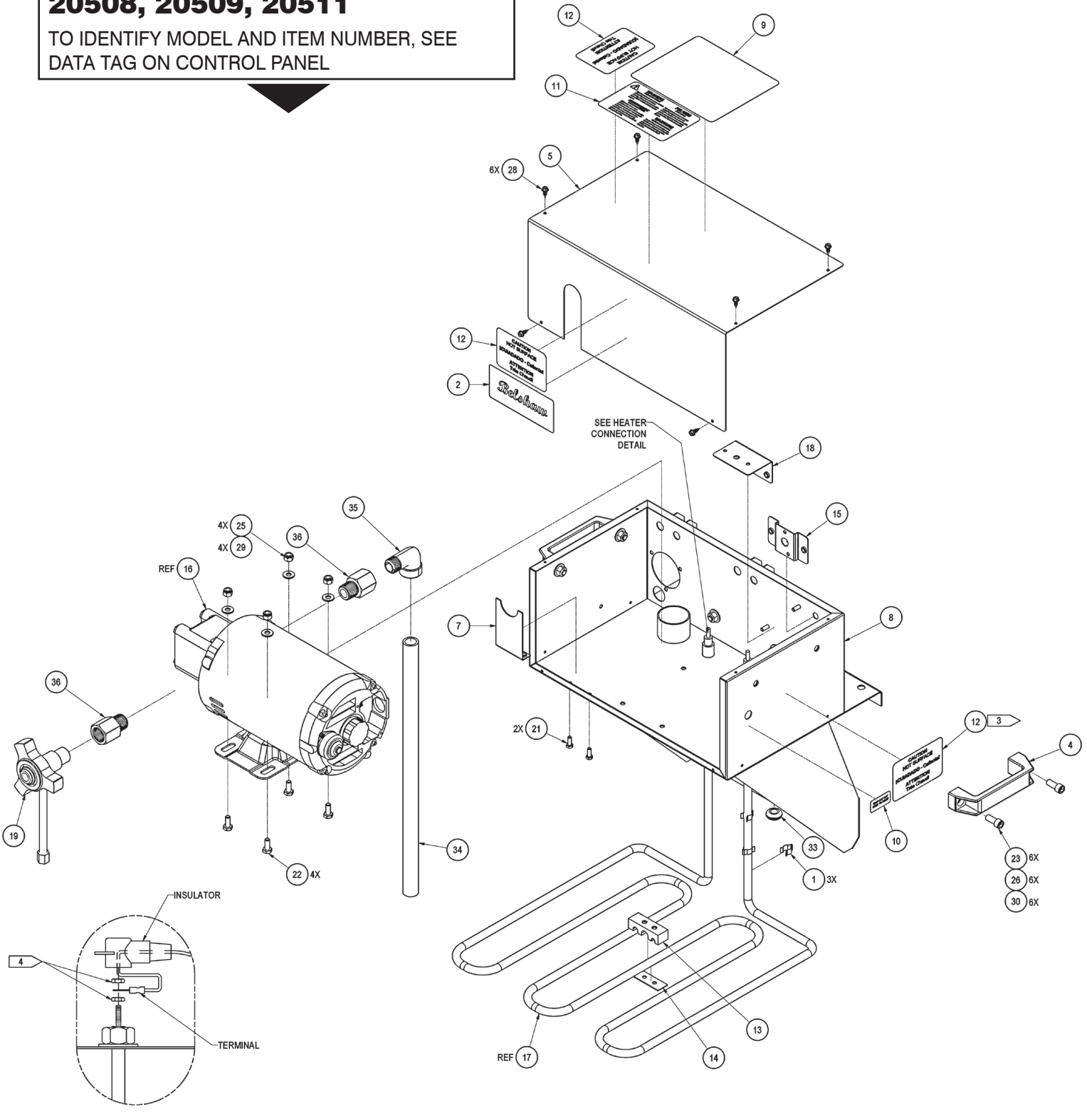
| BILL OF MATERIAL | | | |
|------------------|-----|-------------|-----------------------------|
| ITEM | QTY | PART NUMBER | DESCRIPTION |
| 1 | 1 | SF100-0014 | HOSE - 5' LONG |
| 2 | 2 | SF100-0025 | BAND CLAMP |
| 3 | 1 | SF100-0027 | HANDLE |
| 4 | 1 | SF100-0506 | DISPENSING NOZZLE TUBE ASSY |
| 5 | 1 | SF100-0516 | PUMP HOSE FITTING WLD |

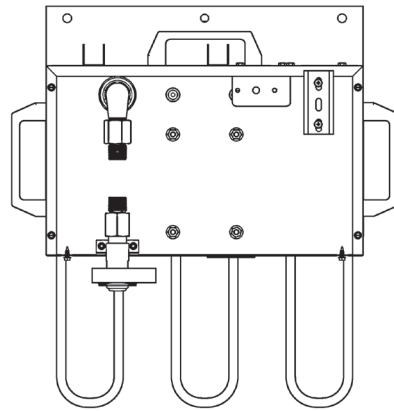
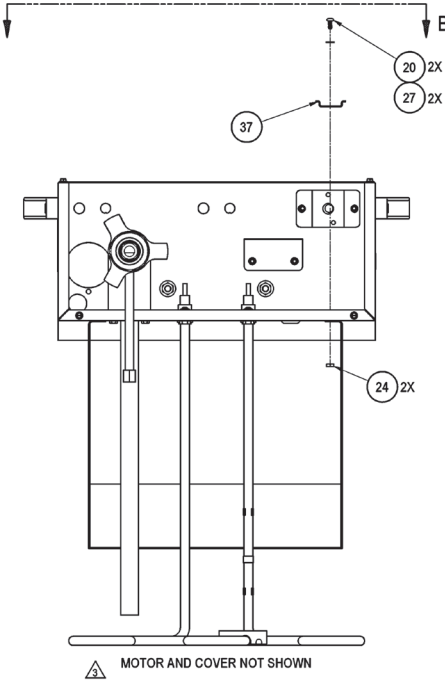
DIAGRAM: EZ24-1000

USE THIS DIAGRAM FOR

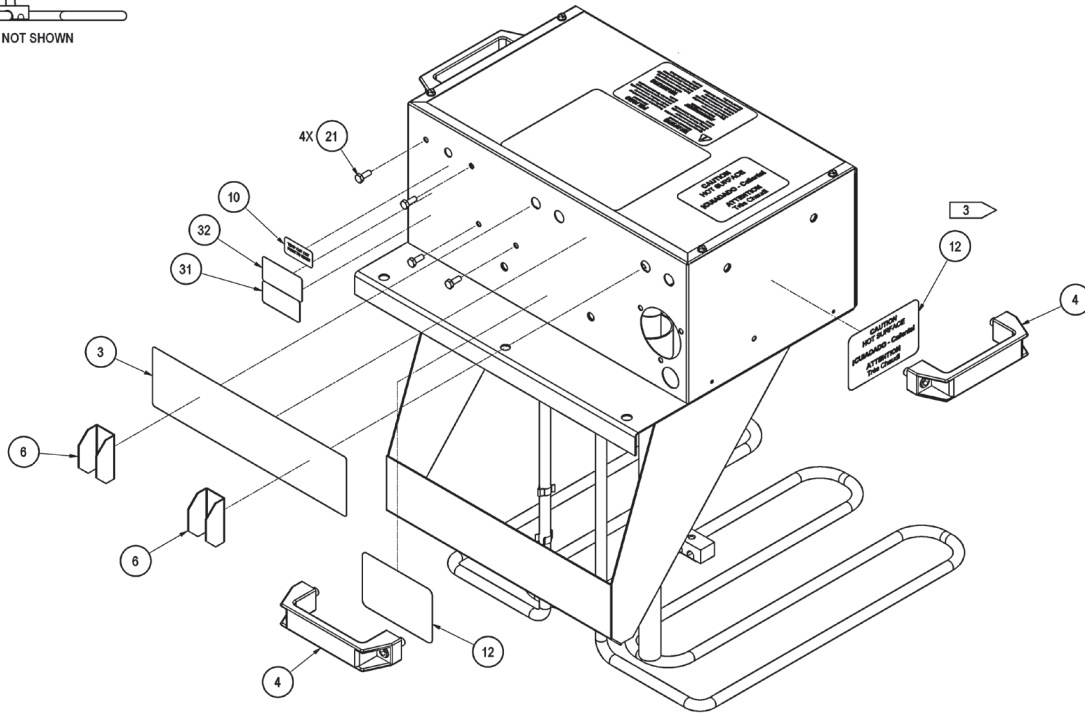
MODEL: EZMelt 18, EZMelt 24
ITEM NUMBERS: 20504, 20505,
20508, 20509, 20511

TO IDENTIFY MODEL AND ITEM NUMBER, SEE
DATA TAG ON CONTROL PANEL





VIEW B-B



| BILL OF MATERIAL | | | |
|------------------|-----|-----------------|---|
| ITEM | QTY | PART NUMBER | DESCRIPTION |
| 1 | 3 | 618L-0100 | THERM BULB CLIP |
| 2 | 1 | EP18/24-0140 | LABEL; BELSHAW LOGO |
| 3 | 1 | EZ24-0015 | LABEL; CONTROL PANEL |
| 4 | 3 | EZ24-0019 | PULL HANDLE |
| 5 | 1 | EZ34-0024 | COVER; ENCLOSURE; MOTOR |
| 6 | 2 | EZ34-0031 | PROTECTOR; SWITCH |
| 7 | 1 | EZ34-0034-A | COVER; SLOT; ENCLOSURE |
| 8 | 1 | EZ34-0501 | WLDT; ENCLOSURE; MOTOR |
| 9 | 1 | EZ6-0021 | LABEL SHORTENING LEVEL |
| 10 | 2 | FM200-0066 | LABEL; TEMPERATURE CUT OUT |
| 11 | 1 | MDD-0459 | LABEL; WARNING; HAZ VOLTAGE |
| 12 | 5 | MK-0186 | CAUTION HOT SURFACE LABEL |
| 13 | 1 | MK-0274 | BULB BRACKET CLAMP, UNIVERSAL |
| 14 | 1 | MK-0275 | BULB CLAMP TOP |
| 15 | 1 | MK-0283-A | HIGH LIMIT MOUNTING BRACKET |
| 16 | 1 | REF | PUMP & MOTOR (115/230V, 50/60 HZ, 1 PH) |
| 17 | 1 | REF | HEATER, TUBULAR, 120V |
| 18 | 1 | SM100-0029-A | THERMOSTAT MOUNTING BRACKET |
| 19 | 1 | SM100-0505 | ASSY; LINE BLEEDER |
| 20 | 2 | 903-0410.A | 8-32X3/8 SS PHILIPS HD M/S |
| 21 | 6 | 903-0519SS | 10-24X1/2 HEX HEAD M/S SS |
| 22 | 4 | 903-0973SS | 1/4-20X5/8 SS HEX CAP SCREW |
| 23 | 6 | 903-1320SS | 5/16-18 X 1 SOCKET HEAD CAP SCREW |
| 24 | 2 | 903-5085 | 8-32 SS HEX NUT |
| 25 | 4 | 903-5201SS | NYLOCK NUT, SS, 1/4-20 UNC |
| 26 | 6 | 903-6103 | 5/16-18 UNC SS HEX NUT |
| 27 | 2 | 903-7504SS | Washer Flat #8 (.0172 ID X >375 OD) SST 304 |
| 28 | 6 | 903-7516 | #10X1/2 SS HEX WASHER HD TEK |
| 29 | 4 | 903-7531SS | 1/4 SS WASHER STANDARD FLAT WASHER |
| 30 | 6 | 903-7540SS | SST, 5/16 FLAT WASHER, REGULAR |
| 31 | 1 | 904-0035 | LABEL; ETL LISTED; NSF STD 4 |
| 32 | 1 | 904-0041 | LABEL,ETL LISTED |
| 33 | 1 | 905-0070 | 3/8 GROMMET,RUBBER #1724 |
| 34 | 1 | 954-0005-16.50A | 1/2X16.50 NIPPLE SS THRD 1 END |
| 35 | 1 | 959-0014-D | 1/2 SS STREET ELBOW |
| 36 | 2 | 959-0027 | ADAPTER M-F NPT, 1/2-14, 316 SS |
| 37 | 1 | 990-0260-3 | DIN RAIL 35MMX7.5MMX3"LG |

DIAGRAM: EZ34-1000

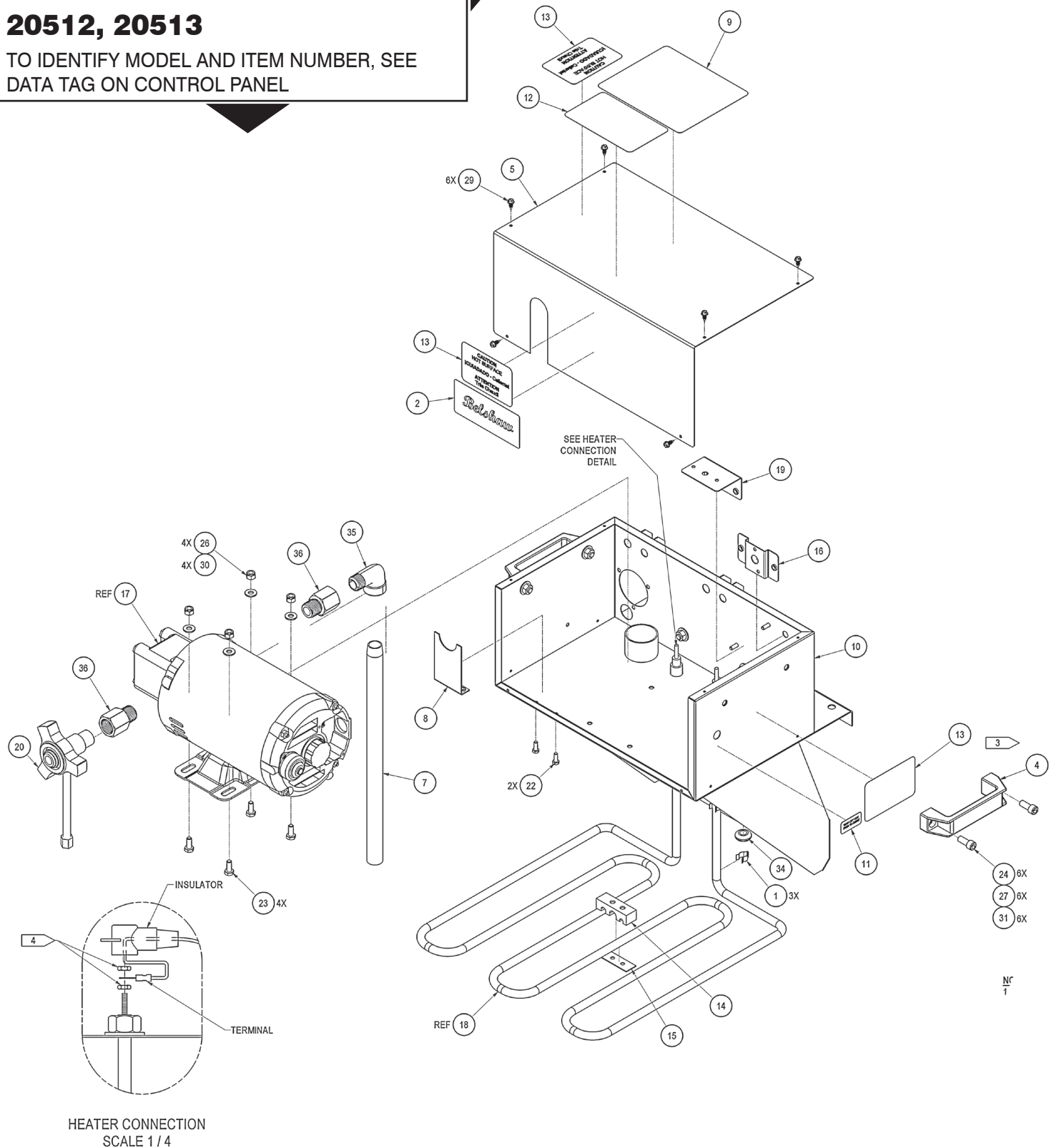
USE THIS DIAGRAM FOR

MODEL: EZMelt 34

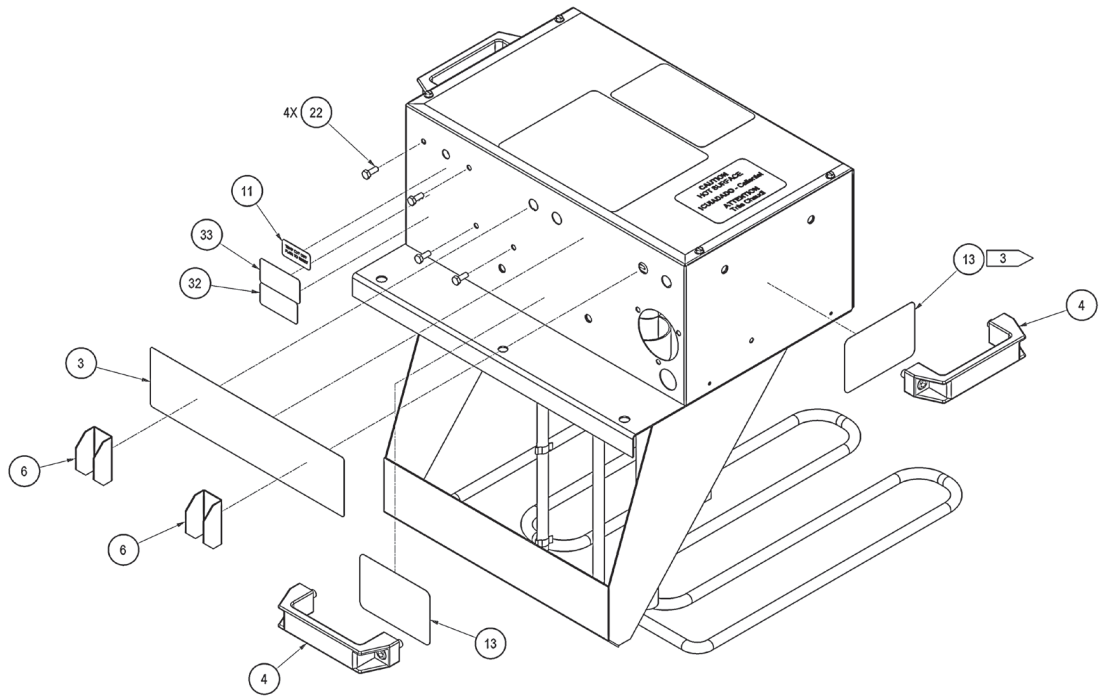
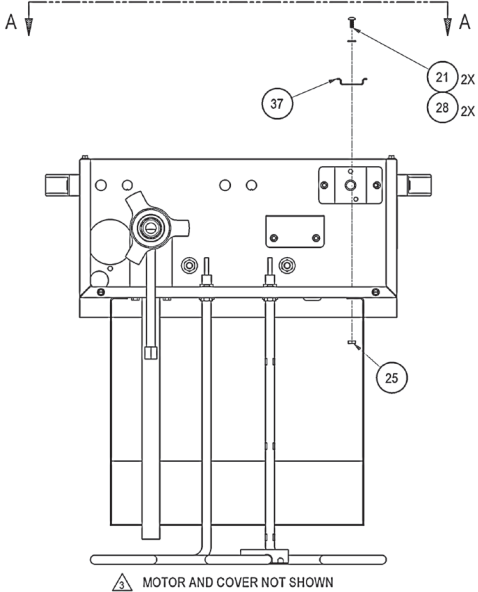
ITEM NUMBER:

20512, 20513

TO IDENTIFY MODEL AND ITEM NUMBER, SEE
DATA TAG ON CONTROL PANEL

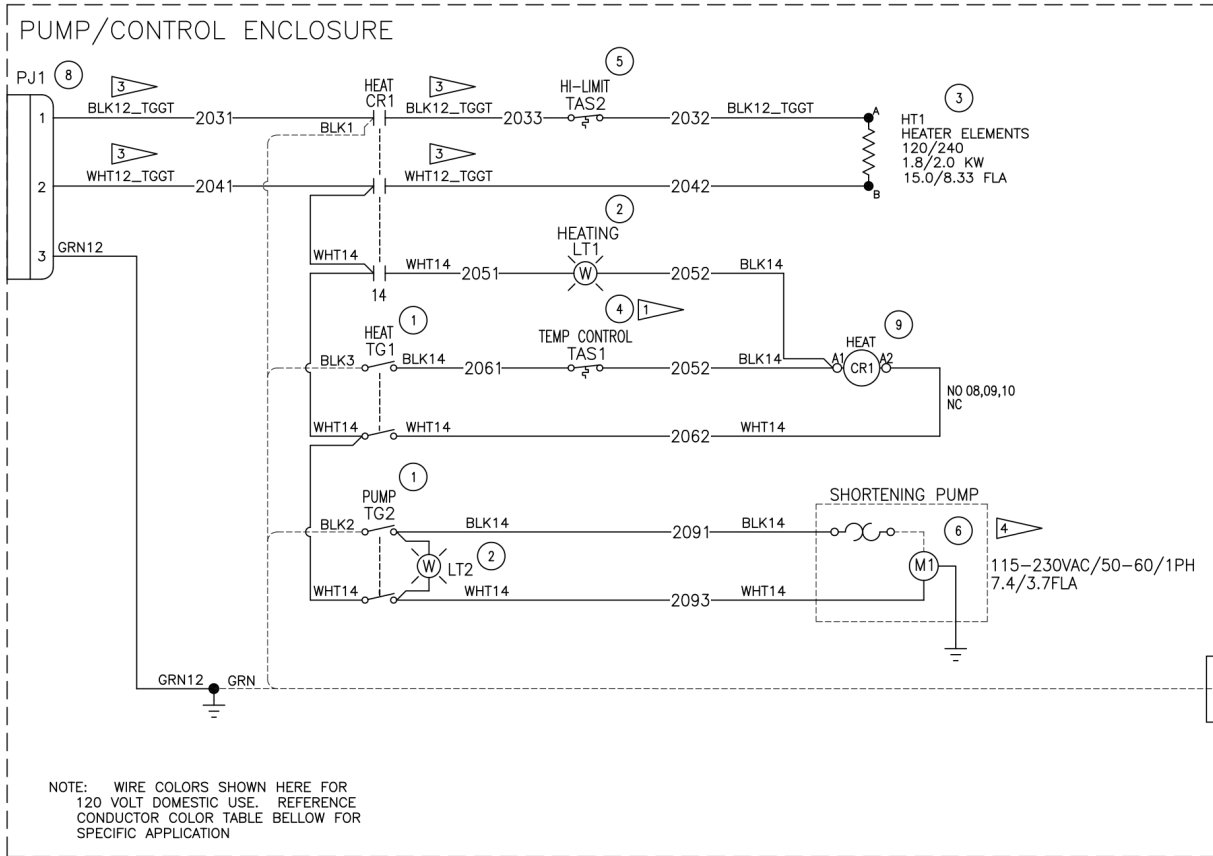


| BILL OF MATERIAL | | | |
|------------------|-----|--------------|---|
| ITEM | QTY | PART NUMBER | DESCRIPTION |
| 1 | 3 | 618L-0100 | THERM BULB CLIP |
| 2 | 1 | EP18/24-0140 | LABEL; BELSHAW LOGO |
| 3 | 1 | EZ24-0015 | LABEL; CONTROL PANEL |
| 4 | 3 | EZ24-0019 | PULL HANDLE |
| 5 | 1 | EZ34-0024 | COVER; ENCLOSURE; MOTOR |
| 6 | 2 | EZ34-0031 | PROTECTOR; SWITCH |
| 7 | 1 | EZ34-0032 | TUBE; PICK-UP |
| 8 | 1 | EZ34-0034-A | COVER; SLOT; ENCLOSURE |
| 9 | 1 | EZ34-0037 | LABEL; SHORTENING LEVELS |
| 10 | 1 | EZ34-0501 | WLDT; ENCLOSURE; MOTOR |
| 11 | 2 | FM200-0066 | LABEL; TEMPERATURE CUT OUT |
| 12 | 1 | MDD-0459 | LABEL; WARNING; HAZ VOLTAGE |
| 13 | 5 | MK-0186 | CAUTION HOT SURFACE LABEL |
| 14 | 1 | MK-0274 | BULB BRACKET CLAMP, UNIVERSAL |
| 15 | 1 | MK-0275 | BULB CLAMP TOP |
| 16 | 1 | MK-0283-A | HIGH LIMIT MOUNTING BRACKET |
| 17 | 1 | REF | PUMP & MOTOR (115/230V, 50/60 HZ, 1 PH) |
| 18 | 1 | REF | HEATER, TUBULAR, 120V |
| 19 | 1 | SM100-0029-A | THERMOSTAT MOUNTING BRACKET |
| 20 | 1 | SM100-0505 | ASSY; LINE BLEEDER |
| 21 | 2 | 903-0410.A | 8-32X3/8 SS PHILIPS HD M/S |
| 22 | 6 | 903-0519SS | 10-24X1/2 HEX HEAD M/S SS |
| 23 | 4 | 903-0973SS | 1/4-20X5/8 SS HEX CAP SCREW |
| 24 | 6 | 903-1320SS | 5/16-18 X 1 SOCKET HEAD CAP SCREW |
| 25 | 2 | 903-5085 | 8-32 SS HEX NUT |
| 26 | 4 | 903-5201SS | NYLOCK NUT, SS, 1/4-20 UNC |
| 27 | 6 | 903-6103 | 5/16-18 UNC SS HEX NUT |
| 28 | 2 | 903-7504SS | Washer Flat #8 (.0172 ID X >375 OD) SST 304 |
| 29 | 6 | 903-7516 | #10X1/2 SS HEX WASHER HD TEK |
| 30 | 4 | 903-7531SS | 1/4 SS WASHER STANDARD FLAT WASHER |
| 31 | 6 | 903-7540SS | SST, 5/16 FLAT WASHER, REGULAR |
| 32 | 1 | 904-0035 | LABEL; ETL LISTED; NSF STD 4 |
| 33 | 1 | 904-0041 | LABEL; ETL LISTED |
| 34 | 1 | 905-0070 | 3/8 GROMMET, RUBBER #1724 |
| 35 | 1 | 959-0014-D | 1/2 SS STREET ELBOW |
| 36 | 2 | 959-0027 | ADAPTER M-F NPT, 1/2-14, 316 SS |
| 37 | 1 | 990-0260-3 | DIN RAIL 35MMX7.5MMX3"LG |



USE THIS DIAGRAM FOR

MODELS: EZMelt 18, EZMelt 24, EZMelt 34
All Item Numbers



NOTE: WIRE COLORS SHOWN HERE FOR 120 VOLT DOMESTIC USE. REFERENCE CONDUCTOR COLOR TABLE BELOW FOR SPECIFIC APPLICATION

2 DOMESTIC/CSA EXPORT WIRE COLOR STANDARD

| | |
|---|-----------------|
| AC POWER (UNGROUND) AT SUPPLY VOLTAGE | BLACK |
| AC POWER (UNGROUND) AT LESS THAN SUPPLY VOLTAGE | RED |
| GROUND AC CONTROL CIRCUIT REGARDLESS OF VOLTAGE | WHITE |
| DC CONTROL (UNGROUND) CIRCUIT | BLUE |
| GROUND DC CONTROL CIRCUIT | WHITE/BLUE* |
| AC LOW VOLTAGE (<30VAC) CONTROL CIRCUIT | PURPLE (VIOLET) |
| CONTROL VOLTAGE (<30V) FROM SEPERATE SOURCE | ORANGE/WHITE |
| GROUND | GREEN/YELLOW |

*BLUE/WHT ACCEPTABLE

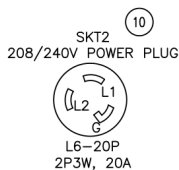
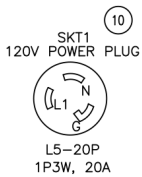
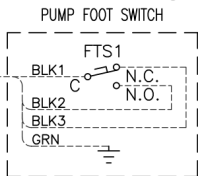
NOTES:

- 1 SET THERMOSTAT TO 225° F
 - 2 USE 105° MACHINE TOOL WIRE
 - 3 USE HIGH TEMP TGGT FIBERGLASS INSULATED WIRE ON HEATER LOAD.
 - 4 WIRE MOTOR AS SHOWN BELOW TO REVERSE DIRECTION, INTERCHANGE LEADS 5 & 8.
- INTERNAL WIRING SHOWN IN DASHED LINE-TYPE, TO REMAIN ON DESIGNATED TERMINALS FOR BOTH LOW VOLTAGE & HIGH VOLTAGE CONFIGURATIONS.

BILL OF MATERIAL – EZ-17XX

| ITEM | EZ18/24 | | | | EZ34 | | | | EZ34LC | | PART NO. | DESCRIPTION |
|------|-------------|-------------|----------------------|----------------------|-------------|-------------|----------------------|----------------------|----------------------|-------------------------------------|---------------------------------------|-------------|
| | 120V | | 240V | | 120V | | 220V | | 240V | | | |
| | DOM 1701 | EXP 1702 | DOM 1703 (R11) | EXP 1704 (R11) | DOM 1705 | EXP 1706 | DOM 1707 (R11) | EXP 1708 (R11) | DOM 1715 (R11) | | | |
| 1 | 2 | 2 | 2 | 2 | 2 | 2 | 2 | 2 | 2 | 624-0003A | TOGGLE SWITCH, DPST, 20 AMPS, SLIP-ON | |
| 2 | 2 | 2 | | | 2 | 2 | | | | PLT-0002 | PILOT LIGHT, 125 VOLT, CLEAR | |
| | | | 2 | 2 | | | 2 | 2 | 2 | PLT-0001 | PILOT LIGHT, 250 VOLT, CLEAR | |
| 3 | 1 | 1 | | | | | | | | EZ24-0001 | HEATER ELEMENT, 1800W @ 120V | |
| | | | 1 | 1 | | | | | | EZ24-0002 | HEATER ELEMENT, 2000W @ 240V | |
| | | | | | 1 | 1 | | | | EZ34-0016 | HEATER ELEMENT, 1800W @ 120V | |
| | | | | | | | 1 | 1 | 1 | EZ34-0015 | HEATER ELEMENT, 2000W @ 240V | |
| 4 | 1 | 1 | 1 | 1 | 1 | 1 | 1 | 1 | 618-0008 | THERMOSTAT 1 POLE | | |
| 5 | 1 | 1 | 1 | 1 | 1 | 1 | 1 | 1 | FM200-0065M | HI-LIMIT CONTROL | | |
| 6 | 1 | 1 | 1 | 1 | 1 | 1 | 1 | 1 | SF100-0046 | PUMP MTR ASSY,115/208-240V, 50/60HZ | | |
| 7 | 1 | 1 | 1 | 1 | 1 | 1 | 1 | 1 | 1 | EZ6-0061A | FOOT SWITCH, NEMA 4 | |
| 8 | 1 | | | | 1 | | | | | EZ34-0041 | FLANGED INLET, NEMA L5-20P | |
| | | | 1 | | | | 1 | | 1 | EZ34-0042 | FLANGED INLET, NEMA L6-20P | |
| 9 | 1 | 1 | | | 1 | 1 | | | | CTR-0001-NC | CONTACTOR, 120V, 20A, W/ NC AUX | |
| | | | 1 | 1 | | | 1 | 1 | 1 | CTR-0039 | CONTACTOR, 230V, 20A, W/ NO AUX | |
| 10 | 1 | | | | 1 | | | | | EZ34-0508-9 | ASSEMBLY; POWER CORD, 125V | |
| | | | 1 | | | | 1 | | | EZ34-0509-9 | ASSEMBLY; POWER CORD, 250V | |
| | | 1 | | 1 | | 1 | | 1 | | EZ34-0511 | ASSEMBLY; POWER CORD, EXPORT | |
| | | | | | | | | | 1 | EZ34-0513 | ASSEMBLY; POWER CORD, CENTURY | |
| 11 | 1 | 1 | 1 | 1 | 1 | 1 | 1 | 1 | 1 | 992-0003 | SHC-1024 CORD CLAMP .500-.625 | |
| 12 | 1 | | 1 | | 1 | | 1 | | 1 | 618-0008A | THERMOSTAT KNOB | |
| | | 1 | | 1 | | 1 | | 1 | | DR42-0338 | THERMOSTAT KNOB (EXP) | |

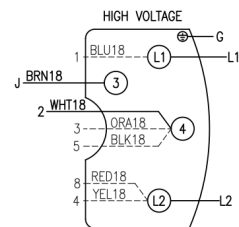
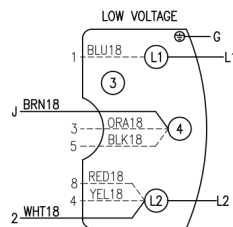
⑦



⑫

| DATA TAG | |
|----------|-------|
| VOLTS | 200 |
| HERTZ | 50/60 |
| PHASE | 1 |
| KW | 1.70 |
| AMPS | 8.5 |

| DATA TAG | |
|----------|-------|
| VOLTS | 120 |
| HERTZ | 50/60 |
| PHASE | 1 |
| KW | 1.8 |
| AMPS | 15 |



| DATA TAG | |
|----------|-----------|
| VOLTS | 208/240 |
| HERTZ | 50/60 |
| PHASE | 1 |
| KW | 1.75/2.25 |
| AMPS | 9.5/10.3 |

| AS/NZ DATA TAG | |
|----------------|------|
| VOLTS | 240 |
| HERTZ | 50 |
| PHASE | 1 |
| KW | 2.25 |
| AMPS | 10.3 |

| AS/NZ DATA TAG | |
|----------------|------|
| VOLTS | 220 |
| HERTZ | 50 |
| PHASE | 1 |
| KW | 1.93 |
| AMPS | 8.8 |

Belshaw

www.belshaw.com

814 44th Street NW, Suite 103
Auburn, WA 98001 USA

1-800-BELSHAW
1-800-578-2547 (USA/Canada)
(+1) 206-322-5474 (Worldwide)

service@belshaw.com

an Ali Group Company



The Spirit of Excellence